



Air conditioning solution  
for TELECOM  
and low-density  
server rooms

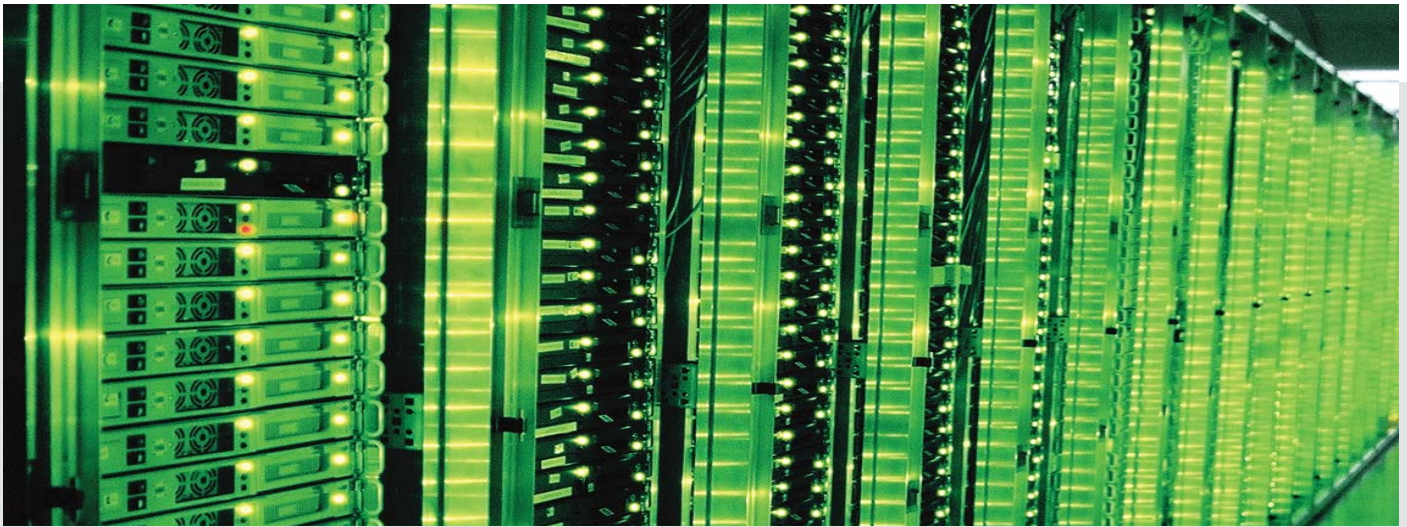


## Midea MSR1 DC-inverter air conditioners with LAC (low-ambient control)

Modern communication rooms and low-density server rooms require inverter control and variable cooling capacity to satisfy their demand for air conditioning. Inverter technology has many benefits over common ON/OFF type regulation: energy saving, more precise temperature control, possibility to avoid large voltage fluctuations during compressor startup and increased reliability and lifespan of the product.

Regular inverter air-conditioners are able to work until -5C in cooling mode, that's why we have developed special inverter product with factory installed low-ambient cooling option that will allow faultless operation of our products in cooling mode down to -15C.

# Air conditioning solution for Telecom and low-density server rooms



## Specification RI series LAC



	Indoor unit Outdoor unit		MSR1-09HRDN1-QC2 MOR-09HDN1-QC2	MSR1-12HRDN1-QC2 MOR2-12HDN1-QC2	MSR1-18HRDN1-QC2(C) MOC-18HDN1-QC2	MSR1-24HRDN1-QC2W MOF-24HDN1-QC2W
Capacity	Cooling Capacity	Btu/h	8500 (2250~10000)	11 000 (2450~13500)	17 000 (5100~22000)	23 000 (12000~25000)
		kW	2.5 (0.7~2.9)	3.2 (0.7~4.0)	5.0 (1.5~6.4)	6.7 (3.5~7.3)
	Heating Capacity	Btu/h	9 500 (2300~11000)	12 500 (2800~16000)	17 000 (5300~23000)	25 000 (11000~27000)
		kW	2.8 (0.7~3.2)	3.6 (0.8~4.6)	5.0 (1.5~6.7)	7.3 (3.2~7.9)
Electrical Parts	Power Supply	V~,Hz,Ph	220-240V~,50Hz,1Ph	220-240V~,50Hz,1Ph	220-240V~,50Hz,1Ph	220-240V~,50Hz,1Ph
	Power Input (W)	Cooling	770 (180~1100)	1 000 (210~1380)	1 550 (380~2300)	2 100 (820~2500)
		Heating	770 (170~1050)	1 010 (210~1480)	1 380 (350~2000)	2 030 (800~2700)
	Operating Current (A)	Cooling	3.4 (0.9~4.8)	4.4 (1.0~6.2)	6.9 (1.8~10.2)	9.4 (3.6~11.2)
Heating		3.4 (0.8~4.6)	4.5 (1.0~6.6)	6.2 (1.6~9.0)	9.1 (3.5~12.0)	
Performance	EER	W/W	3.23	3.22	3.21	3.21
	COP	W/W	3.61	3.63	3.61	3.61
	Energy Rate		A/A	A/A	A/A	A/A
	Air Flow Volume (m <sup>3</sup> /h)	Indoor	450/380/300	550/450/350	800/700/600	1150/1050/900
	Noise Level (dB(A))	Indoor(Hi/Med/Lo)	36/33/26	41/35/29	45/42/37	48/45/43
Outdoor		52	52	56	57	
Net Dimension & Weight	Indoor(mm)	WxHxD	710x250x189	790x275x190	940x275x198	1030x313x221
	Outdoor(mm)	WxHxD	660x540x255	660x540x255	760x590x285	845x695x335
	Net Weight (kg)	Indoor/Outdoor	7/27.5	8.5/29	11/40.5	15.5/49.5
Packing Dimension	Indoor(mm)	WxHxD	775x324x260	865x350x265	1015x350x265	1135x435x315
	Outdoor(mm)	WxHxD	770x585x325	770x585x325	887x645x355	965x755x395
	Gross Weight (kg)	Indoor/Outdoor	8.5/29.5	10.5/31	13/43	17/52.5
Piping Size	Liquid(mm(inch))		Ø 6.35 (1/4")	Ø 6.35 (1/4")	Ø 6.35 (1/4")	Ø 9.53 (3/8")
	Gas(mm(inch))		Ø 9.53 (3/8")	Ø 9.53 (3/8")	Ø 12.7 (1/2")	Ø 16.0 (5/8")
Operating conditions	Cooling		-15 ~ 35	-15 ~ 35	-15 ~ 35	-15 ~ 35
	Heating	C	-15 ~ 15	-15 ~ 15	-15 ~ 15	-15 ~ 15

Remarks: 1.The above designs and specifications are subject to change of product improvement without prior notice.  
 Distributor in Baltics: Airwave OÜ, www.airwave.ee, www.airwave.lv, www.airwave.lt  
 © 2011